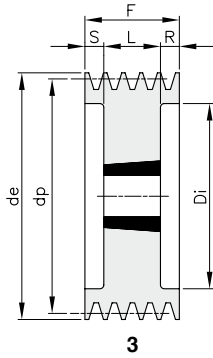
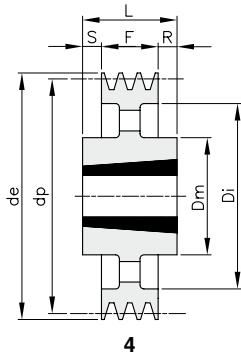


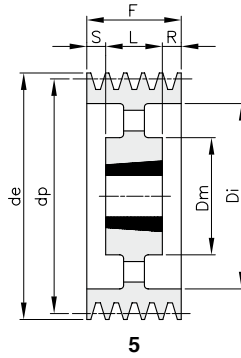
## SPC – 5



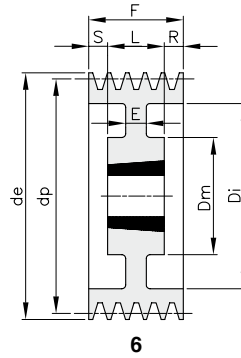
3



4



5



6

Werkstoff: Grauguss EN-GJL-200

| Beschreibung | Artikelnr. | Rille | dp   | de     | Typ | Spann-<br>buchsen | Bohrung<br>max. | Dm  | Di   | E  | F   | L   | R    | S    | kg     |
|--------------|------------|-------|------|--------|-----|-------------------|-----------------|-----|------|----|-----|-----|------|------|--------|
| SPC 200 05   | TC050200   | 5     | 200  | 209,6  | 3   | 3535              | 90              |     | 144  |    | 136 | 89  | 23,5 | 23,5 | 13,00  |
| SPC 212 05   | TC050212   | 5     | 212  | 221,6  | 3   | 3535              | 90              |     | 156  |    | 136 | 89  | 23,5 | 23,5 | 15,60  |
| SPC 224 05   | TC050224   | 5     | 224  | 233,6  | 3   | 3535              | 90              |     | 168  |    | 136 | 89  | 23,5 | 23,5 | 18,40  |
| SPC 236 05   | TC050236   | 5     | 236  | 245,6  | 3   | 3535              | 90              |     | 180  |    | 136 | 89  | 23,5 | 23,5 | 21,20  |
| SPC 250 05   | TC050250   | 5     | 250  | 259,6  | 3   | 3535              | 90              |     | 194  |    | 136 | 89  | 23,5 | 23,5 | 24,70  |
| SPC 265 05   | TC050265   | 5     | 265  | 274,6  | 3   | 3535              | 90              |     | 209  |    | 136 | 89  | 23,5 | 23,5 | 28,60  |
| SPC 280 05   | TC050280   | 5     | 280  | 289,6  | 3   | 3535              | 90              |     | 224  |    | 136 | 89  | 23,5 | 23,5 | 33,00  |
| SPC 300 05   | TC050300   | 5     | 300  | 309,6  | 6   | 3535              | 90              | 175 | 244  | 20 | 136 | 89  | 23,5 | 23,5 | 30,50  |
| SPC 315 05   | TC050315   | 5     | 315  | 324,6  | 5   | 3535              | 90              | 175 | 259  |    | 136 | 89  | 23,5 | 23,5 | 28,00  |
| SPC 335 05   | TC050335   | 5     | 335  | 344,6  | 5   | 3535              | 90              | 175 | 279  |    | 136 | 89  | 23,5 | 23,5 | 31,00  |
| SPC 355 05   | TC050355   | 5     | 355  | 364,6  | 5   | 3535              | 90              | 175 | 299  |    | 136 | 89  | 23,5 | 23,5 | 33,50  |
| SPC 375 05   | TC050375   | 5     | 375  | 384,6  | 5   | 3535              | 90              | 175 | 319  |    | 136 | 89  | 23,5 | 23,5 | 35,00  |
| SPC 400 05   | TC050400   | 5     | 400  | 409,6  | 5   | 3535              | 90              | 175 | 344  |    | 136 | 89  | 23,5 | 23,5 | 37,00  |
| SPC 425 05   | TC050425   | 5     | 425  | 434,6  | 5   | 3535              | 90              | 175 | 369  |    | 136 | 89  | 23,5 | 23,5 | 40,00  |
| SPC 450 05   | TC050450   | 5     | 450  | 459,6  | 5   | 4040              | 100             | 210 | 394  |    | 136 | 102 | 17   | 17   | 46,00  |
| SPC 475 05   | TC050475   | 5     | 475  | 484,6  | 5   | 4040              | 100             | 210 | 419  |    | 136 | 102 | 17   | 17   | 50,30  |
| SPC 500 05   | TC050500   | 5     | 500  | 509,6  | 5   | 4040              | 100             | 210 | 444  |    | 136 | 102 | 17   | 17   | 53,00  |
| SPC 530 05   | TC050530   | 5     | 530  | 539,6  | 5   | 4545              | 110             | 240 | 474  |    | 136 | 114 | 11   | 11   | 65,00  |
| SPC 560 05   | TC050560   | 5     | 560  | 569,6  | 5   | 4545              | 110             | 242 | 504  |    | 136 | 114 | 11   | 11   | 68,00  |
| SPC 630 05   | TC050630   | 5     | 630  | 639,6  | 5   | 5050              | 125             | 267 | 574  |    | 136 | 127 | 4,5  | 4,5  | 81,00  |
| SPC 710 05   | TC050710   | 5     | 710  | 719,6  | 5   | 5050              | 125             | 267 | 654  |    | 136 | 127 | 4,5  | 4,5  | 96,50  |
| SPC 800 05   | TC050800   | 5     | 800  | 809,6  | 5   | 5050              | 125             | 267 | 737  |    | 136 | 127 | 4,5  | 4,5  | 94,00  |
| SPC1000 05   | TC051000   | 5     | 1000 | 1009,6 | 5   | 5050              | 125             | 267 | 937  |    | 136 | 127 | 4,5  | 4,5  | 139,00 |
| SPC1250 05   | TC051250   | 5     | 1250 | 1259,6 | 5   | 5050              | 125             | 267 | 1187 |    | 136 | 127 | 4,5  | 4,5  | 191,00 |