

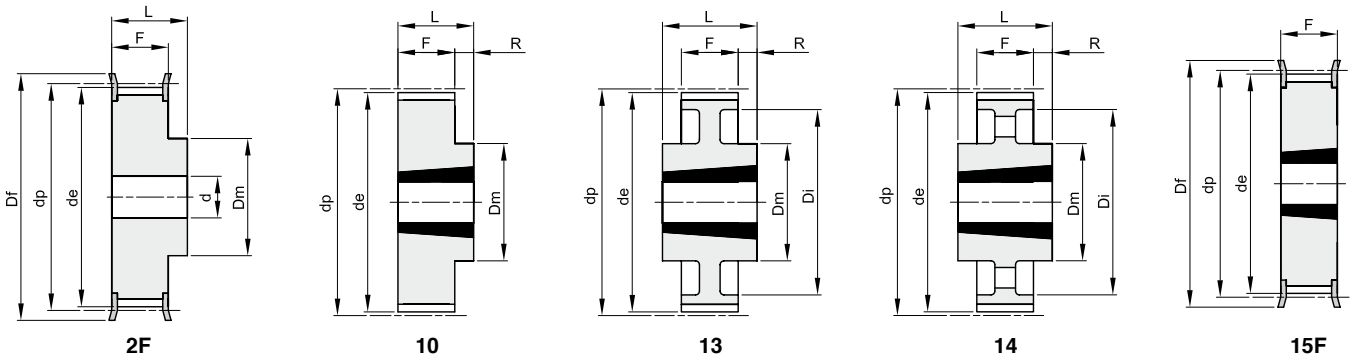


ZAHNRIEMENRÄDER „PCB“ POLYCHAIN FÜR TAPERBUCHSEN

8M

Teilung 8 mm

für Zahnriemenbreite 36 mm



Werkstoff: Stahl
Werkstoff: Grauguss (GG)

| Beschreibung | Artikelnr. | Typ | Werkstoff | Zähnezahl | Spanbuchsentyp | Bohrung max. | dp | de | Df | Dm | Di | F | L | R | d | Nr. Bordscheiben | kg |
|---------------|-------------|-----|-----------|-----------|----------------|--------------|--------|--------|-----|-----|-----|----|----|----|----|------------------|-------|
| 8M 25S 36 | PCB47036025 | 2F | St | 25 | | | 63,66 | 62,06 | 66 | 49 | | 45 | 55 | | 12 | 310 | 1,40 |
| TL 8M 28S 36 | PCB47036028 | 15F | St | 28 | 1210 | 32 | 71,30 | 69,70 | 75 | | | 45 | | | | 312 | 0,64 |
| TL 8M 30S 36 | PCB47036030 | 15F | St | 30 | 1610 | 42 | 76,39 | 74,79 | 83 | | | 45 | | | | 314 | 0,59 |
| TL 8M 32S 36 | PCB47036032 | 15F | St | 32 | 1610 | 42 | 81,49 | 79,89 | 87 | | | 45 | | | | 315 | 0,79 |
| TL 8M 34S 36 | PCB47036034 | 15F | St | 34 | 1610 | 42 | 86,58 | 84,98 | 91 | | | 45 | | | | 316 | 0,63 |
| TL 8M 36S 36 | PCB47036036 | 15F | St | 36 | 1610 | 42 | 91,67 | 90,07 | 98 | | | 45 | | | | 319 | 1,15 |
| TL 8M 38S 36 | PCB47036038 | 15F | St | 38 | 1610 | 42 | 96,77 | 95,17 | 103 | | | 45 | | | | 320 | 1,39 |
| TL 8M 40S 36 | PCB47036040 | 15F | St | 40 | 2012 | 50 | 101,86 | 100,26 | 106 | | | 45 | | | | 321 | 1,34 |
| TL 8M 45S 36 | PCB47036045 | 15F | St | 45 | 2012 | 50 | 114,59 | 112,99 | 119 | | | 45 | | | | 325 | 1,87 |
| TL 8M 48S 36 | PCB47036048 | 15F | St | 48 | 2012 | 50 | 122,23 | 120,63 | 127 | | | 45 | | | | 327 | 2,20 |
| TL 8M 50S 36 | PCB47036050 | 15F | St | 50 | 2012 | 50 | 127,32 | 125,72 | 135 | | | 45 | | | | 328 | 2,70 |
| TL 8M 56S 36 | PCB47036056 | 15F | St | 56 | 2517 | 65 | 142,60 | 141,00 | 148 | | | 45 | | | | 333 | 3,00 |
| TL 8M 60S 36 | PCB47036060 | 15F | St | 60 | 2517 | 65 | 152,79 | 151,19 | 158 | | | 45 | | | | 335 | 3,80 |
| TL 8M 64S 36 | PCB47036064 | 15F | St | 64 | 2517 | 65 | 162,97 | 161,37 | 168 | | | 45 | | | | 338 | 4,50 |
| TL 8M 75S 36 | PCB47036075 | 10 | GG | 75 | 3020 | 75 | 190,99 | 189,39 | | 150 | | 45 | 51 | 6 | | | 6,20 |
| TL 8M 80S 36 | PCB47036080 | 10 | GG | 80 | 3020 | 75 | 203,72 | 202,12 | | 150 | | 45 | 51 | 6 | | | 7,40 |
| TL 8M 90S 36 | PCB47036090 | 13 | GG | 90 | 3020 | 75 | 229,18 | 227,58 | | 150 | 197 | 45 | 51 | 3 | | | 7,20 |
| TL 8M 112S 36 | PCB47036112 | 13 | GG | 112 | 3020 | 75 | 285,21 | 283,61 | | 150 | 253 | 45 | 51 | 3 | | | 10,40 |
| TL 8M 140S 36 | PCB47036140 | 14 | GG | 140 | 3020 | 75 | 356,51 | 354,91 | | 150 | 324 | 45 | 51 | 3 | | | 12,70 |
| TL 8M 168S 36 | PCB47036168 | 14 | GG | 168 | 3525 | 90 | 427,81 | 426,21 | | 198 | 396 | 45 | 65 | 10 | | | 21,50 |
| TL 8M 192S 36 | PCB47036192 | 14 | GG | 192 | 3525 | 90 | 488,92 | 487,32 | | 198 | 457 | 45 | 65 | 10 | | | 27,00 |