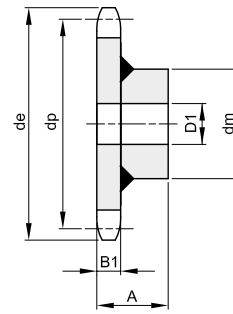
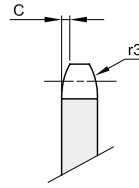




# KETTENRÄDER FÜR FÖRDERKETTEN

## Teilung 50,8 Rollen Ø 30

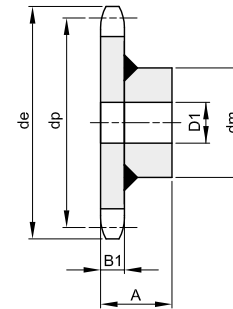
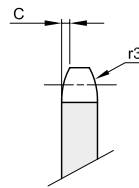


B1	C	r3
8,8	3	50

Werkstoff: Stahl

Z	Artikelnr.	de	dp	dm	D1	A	kg	Z	Artikelnr.	de	dp	dm	D1	A	kg
8	332570008	149,0	132,74	58	20	39	1,35	14	332570014	247,0	228,29	88	25	44	4,08
10	332570010	182,0	164,39	88	20	44	2,85	16	332570016	279,0	260,39	118	30	59	7,34
12	332570012	214,0	196,27	88	25	44	3,37								

## Teilung 75 Rollen Ø 25

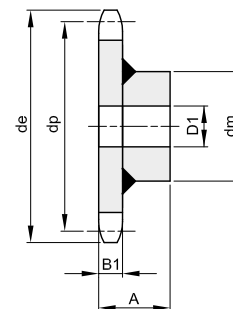
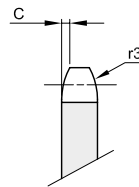


B1	C	r3
10,5	3	50

Werkstoff: Stahl

Z	Artikelnr.	de	dp	dm	D1	A	kg	Z	Artikelnr.	de	dp	dm	D1	A	kg
8	332600008	211,0	195,98	88	25	45,5	4,07								
10	332600010	258,0	242,70	118	25	60,5	7,87								

## Teilung 75 Rollen Ø 31



B1	C	r3
13,5	3	50

Werkstoff: Stahl

Z	Artikelnr.	de	dp	dm	D1	A	kg	Z	Artikelnr.	de	dp	dm	D1	A	kg
6	332610006	168,0	150,00	88	25	48,5	3,26	13	332610013	333,0	313,42	118	30	63,5	11,83
8	332610008	215,0	195,98	88	25	48,5	4,52	14	332610014	357,0	337,05	118	30	63,5	13,15
9	332610009	238,0	219,30	88	25	48,5	5,36	15	332610015	380,0	360,73	118	30	63,5	14,45
10	332610010	261,0	242,70	118	30	63,5	8,70	16	332610016	404,0	384,45	133	30	65,0	17,43
11	332610011	286,0	266,25	118	30	63,5	9,60	20	332610020	499,0	479,40	133	30	65,0	23,80
12	332610012	309,0	289,80	118	30	63,5	10,73	21	332610021	523,0	503,17	133	30	65,0	26,07