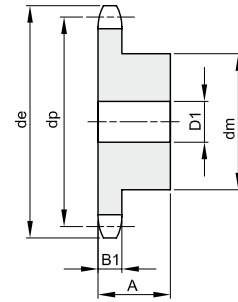
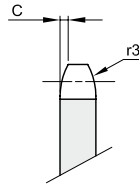




KETTENRÄDER EINFACH ROSTFREI FÜR ROLLENKETTEN – DIN 8187

3/4" x 7/16"
19,05 x 11,68 mm
 Rollen Ø 12,07 mm
12B – 1



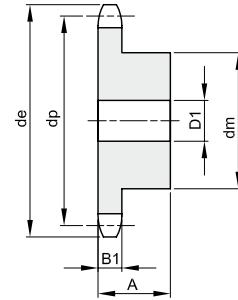
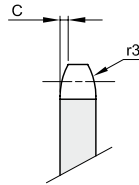
B1	C	r3
11,1	2	19

Werkstoff: Edelstahl 1.4305 AISI 304 L

Z	de	dp	ArtikelNr.	dm	D1	A	kg
13	87,8	79,59	181360013	58	16	35	0,80
14	93,8	85,61	181360014	64	16	35	0,97
15	99,8	91,63	181360015	70	16	35	1,16
16	105,8	97,65	181360016	75	16	35	1,34
17	111,9	103,67	181360017	80	16	35	1,53
18	117,9	109,71	181360018	80	16	35	1,62
19	123,9	115,75	181360019	80	16	35	1,70

Z	de	dp	ArtikelNr.	dm	D1	A	kg
20	130,0	121,78	181360020	80	16	35	1,80
21	136,0	127,82	181360021	90	20	40	2,35
23	148,1	139,90	181360023	90	20	40	2,56
25	160,2	152,00	181360025	90	20	40	2,80

1" x 17,02 mm
25,4 x 17,02 mm
 Rollen Ø 15,88 mm
16B – 1



B1	C	r3
16,2	2,5	26

Werkstoff: Edelstahl 1.4305 AISI 304 L

Z	de	dp	ArtikelNr.	dm	D1	A	kg
12	109,7	98,14	181380012	69	16	40	1,43
13	117,7	106,12	181380013	78	16	40	1,77
14	125,7	114,15	181380014	84	16	40	2,08
15	133,7	122,17	181380015	92	16	40	2,46
16	141,8	130,20	181380016	100	20	45	3,14
17	149,8	138,22	181380017	100	20	45	3,34
18	157,8	146,28	181380018	100	20	45	3,56

Z	de	dp	ArtikelNr.	dm	D1	A	kg
19	165,9	154,33	181380019	100	20	45	3,78
20	173,9	162,38	181380020	100	20	45	4,03
21	182,0	170,43	181380021	110	20	50	5,14