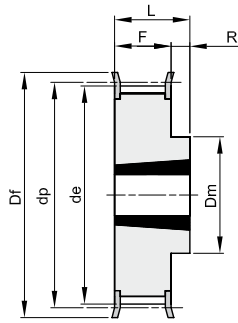




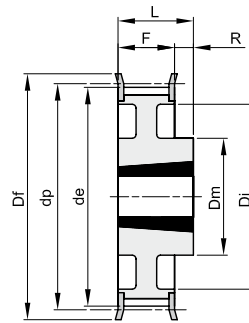
ZAHNRIEMENRÄDER PROFIL HTD® FÜR TAPERBUCHSEN

8M

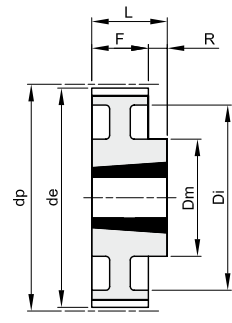
Teilung 8 mm
für Zahnriemenbreite 30 mm



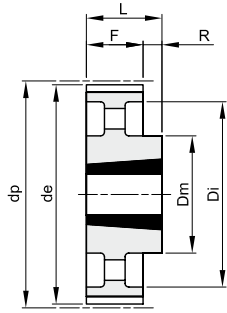
10F



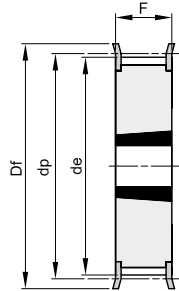
11F



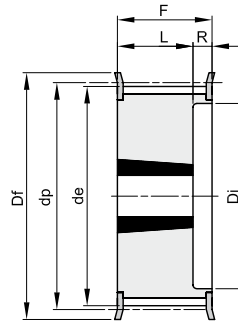
11



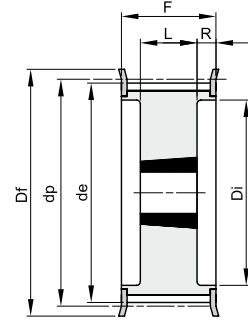
12



15F



16F



18F

Werkstoff: Stahl

Werkstoff: Grauguss (GG)

code	Typ	Werkstoff	Zähne- zahl	Spann- buchsentyp	Bohrung max	dp	de	Df	Dm	Di	F	L	R	Nr. Bordscheiben	kg
TL 22 8M 30	16F	St	22	1008	25	56,02	54,65	60		37	38	22	16	308	0,33
TL 24 8M 30	16F	St	24	1108	25	61,11	59,74	66		44	38	22	16	310	0,40
TL 26 8M 30	16F	St	26	1108	25	66,21	64,84	71		44	38	22	16	311	0,45
TL 28 8M 30	16F	St	28	1210	32	71,30	70,08	75		50	38	25	13	312	0,50
TL 30 8M 30	15F	St	30	1615	42	76,39	75,13	83			38	38		314	0,55
TL 32 8M 30	15F	St	32	1615	42	81,49	80,16	87			38	38		315	0,60
TL 34 8M 30	15F	St	34	1615	42	86,58	85,21	91			38	38		316	0,80
TL 36 8M 30	15F	St	36	1615	42	91,67	90,30	98			38	38		319	1,00
TL 38 8M 30	15F	St	38	1615	42	96,77	95,39	103			38	38		320	1,10
TL 40 8M 30	15F	St	40	1615	42	101,86	100,49	106			38	38		321	1,34
TL 44 8M 30	18F	St	44	2012	50	112,05	110,67	119		86	38	32	3	325	1,30
TL 48 8M 30	18F	St	48	2012	50	122,23	120,86	127		90	38	32	3	327	1,80
TL 56 8M 30	18F	St	56	2012	50	142,60	141,23	148		110	38	32	3	333	3,80
TL 64 8M 30	10F	St	64	2517	60	162,97	161,60	168	125		38	45	7	338	4,30
TL 72 8M 30	11F	St	72	2517	60	183,35	181,97	192	125	158	38	45	7	340	4,40
TL 80 8M 30	11	GG	80	2517	60	203,72	202,35		125	180	38	45	7		4,65
TL 90 8M 30	11	GG	90	2517	60	229,18	227,81		125	204	38	45	7		5,80
TL112 8M 30	12	GG	112	2517	60	285,21	283,83		125	254	38	45	7		6,20
TL144 8M 30	12	GG	144	2517	60	366,69	365,32		125	336	38	45	7		9,00