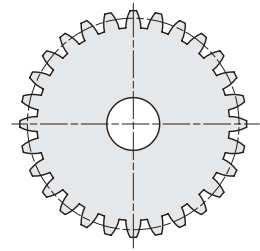
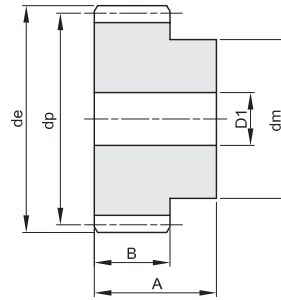
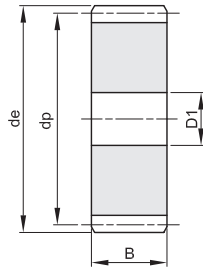


## MODUL 1

Eingriffswinkel  $20^\circ$

A	B
25	15



Werkstoff: Edelstahl 1.4305 // Verzahnung gerade // ab Zähnezahl 80 ohne Nabe

Z	Artikelnr.	de	dp	dm	D1	kg
12	403010012	14	12	9	–	
13	403010013	15	13	10	–	
14	403010014	16	14	11	–	
15	403010015	17	15	12	–	
16	403010016	18	16	13	–	
18	403010018	20	18	15	8	
20	403010020	22	20	16	8	
24	403010024	26	24	20	10	
25	403010025	27	25	20	10	
30	403010030	32	30	20	10	
35	403010035	37	35	25	10	
40	403010040	42	40	25	10	
50	403010050	52	50	30	12	
60	403010060	62	60	40	12	
70	403010070	72	70	50	12	
80	403010080	82	80	–	12	
90	403010090	92	90	–	12	
100	403010100	102	100	–	12	
110	403010110	112	110	–	12	
120	403010120	122	120	–	12	

**MODUL 1,5**

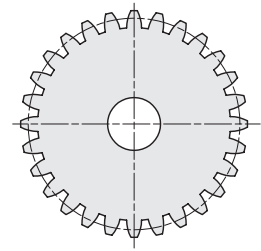
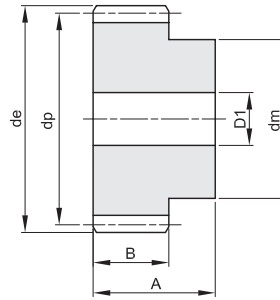
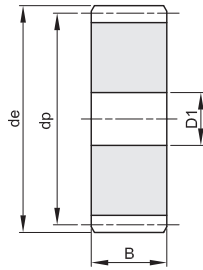
Eingriffswinkel **20°**

**A**

**B**

30

17



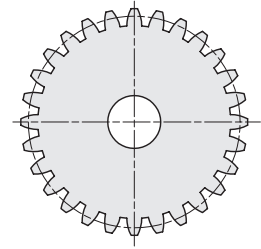
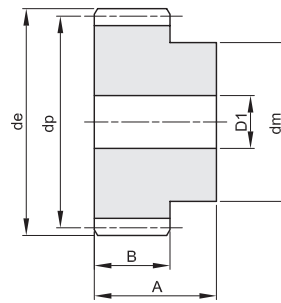
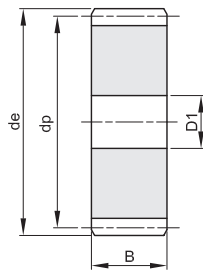
Werkstoff: Edelstahl 1.4305 // Verzahnung gerade // ab Zähnezahl 80 ohne Nabe

Z	Artikelnr.	de	dp	dm	D1	kg
12	403015012	21,0	18,0	14	8	
13	403015013	22,5	19,5	15	8	
14	403015014	24,0	21,0	17	8	
15	403015015	25,5	22,5	18	8	
18	403015018	30,0	27,0	20	8	
20	403015020	33,0	30,0	25	8	
24	403015024	39,0	36,0	25	10	
25	403015025	40,5	37,5	25	10	
30	403015030	48,0	45,0	30	12	
40	403015040	63,0	60,0	40	12	
50	403015050	78,0	75,0	50	14	
60	403015060	93,0	90,0	60	16	
70	403015070	108,0	105,0	70	16	
80	403015080	123,0	120,0	–	16	
120	403015120	183,0	180,0	–	16	

## MODUL 2

Eingriffswinkel  $20^\circ$

A	B
35	20

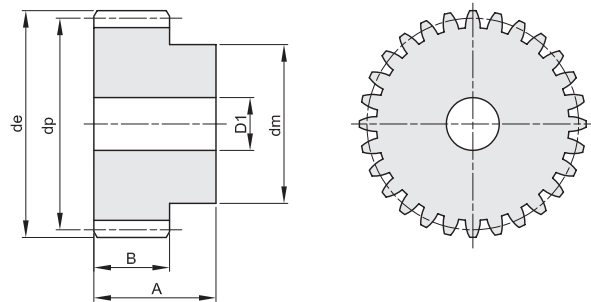


Werkstoff: Edelstahl 1.4305 // Verzahnung gerade // ab Zähnezahl 80 ohne Nabe

Z	Artikelnr.	de	dp	dm	D1	kg
12	403020012	28,0	24,0	18	10	
13	403020013	30,0	26,0	20	10	
14	403020014	32,0	28,0	22	10	
15	403020015	34,0	30,0	24	10	
20	403020020	44,0	40,0	30	10	
24	403020024	52,0	48,0	35	12	
25	403020025	54,0	50,0	35	12	
30	403020030	64,0	60,0	40	14	
40	403020040	84,0	80,0	50	14	
50	403020050	104,0	100,0	70	16	
60	403020060	124,0	120,0	70	16	
80	403020080	164,0	160,0	–	20	

**MODUL 2,5**

Eingriffswinkel **20°**



A	B
45	25

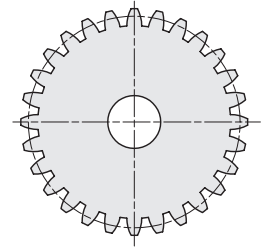
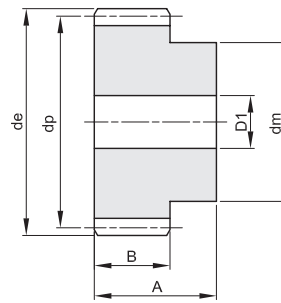
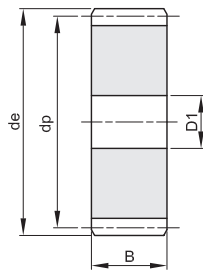
Werkstoff: Edelstahl 1.4305 // Verzahnung gerade

Z	Artikelnr.	de	dp	dm	D1	kg
12	403025012	35,0	30,0	22	10	
13	403025013	37,5	32,5	25	10	
14	403025014	40,0	35,0	28	10	
15	403025015	42,5	37,5	30	10	
20	403025020	55,0	50,0	40	12	
24	403025024	65,0	60,0	45	14	
25	403025025	67,5	62,5	50	14	
30	403025030	80,0	75,0	55	14	
40	403025040	105,0	100,0	70	16	
50	403025050	130,0	125,0	80	20	
60	403025060	155,0	150,0	100	20	

## MODUL 3

Eingriffswinkel 20°

A	B
50	30

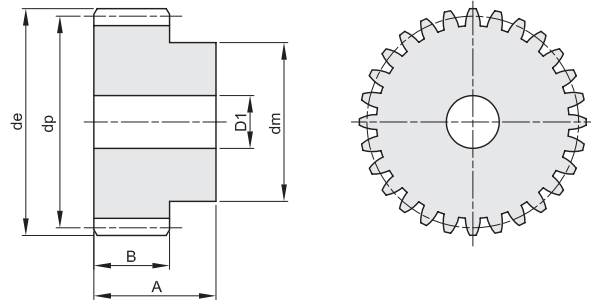


Werkstoff: Edelstahl 1.4305 // Verzahnung gerade // ab Zähnezahl 50 ohne Nabe

Z	Artikelnr.	de	dp	dm	D1	kg
12	403030012	42,0	36,0	27	12	
15	403030015	51,0	45,0	35	12	
20	403030020	66,0	60,0	45	14	
24	403030024	78,0	72,0	50	16	
25	403030025	81,0	75,0	60	16	
30	403030030	96,0	90,0	60	16	
40	403030040	126,0	120,0	80	20	
50	403030050	156,0	150,0	–	20	
60	403030060	186,0	180,0	–	20	

## MODUL 4

Eingriffswinkel  $20^\circ$



A	B
60	40

Werkstoff: Edelstahl 1.4305 // Verzahnung gerade

Z	Artikelnr.	de	dp	dm	D1	kg
12	403040012	56,0	48,0	35	14	
13	403040013	60,0	52,0	40	14	
14	403040014	64,0	56,0	45	14	
15	403040015	68,0	60,0	45	14	
20	403040020	88,0	80,0	60	16	
25	403040025	108,0	100,0	75	20	
30	403040030	128,0	120,0	75	20	