



KETTENRÄDER FÜR TAPERBUCHSEN – DIN 8187

5/8" x 3/8"

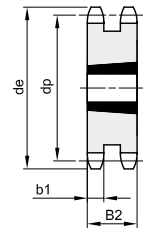
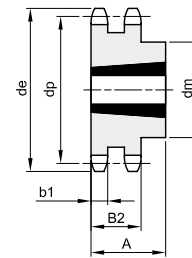
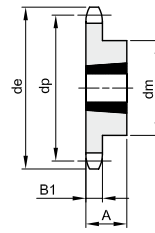
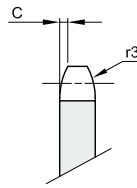
15,875 x 9,65 mm

Rollen Ø 10,16 mm

10B - 1 - 2 - 3

B1 B2 B3 b1 C r3

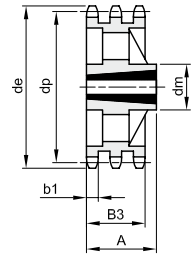
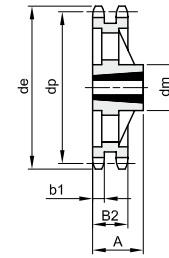
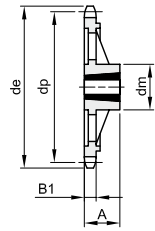
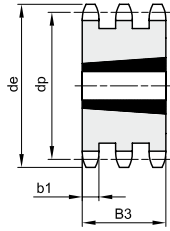
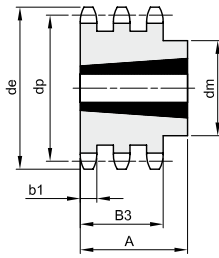
9,1 25,5 42,1 9 1,6 16



1

2

3



4

5

6

7

8

Werkstoff Stahl C45 / * Werkstoff Grauguss EN-GJL-200

Z	de	dp	einfach				zweifach				dreifach						
			dm	A	Buchsentyp	Typ	kg	dm	A	Buchsentyp	Typ	kg	dm	A	Buchsentyp	Typ	kg
13	73,2	66,33	47	22	1008	1	0,23										
14	78,2	71,34	52	22	1108	1	0,27										
15	83,2	76,35	60	25	1210	1	0,30	25,5	1210	3	0,38	42,1	1215	5	0,63		
16	88,3	81,37	63	25	1210	1	0,38	25,5	1610	3	0,42						
17	93,3	86,39	71	25	1610	1	0,38	25,5	1610	3	0,47	42,1	1215	5	1,01		
18	98,3	91,42	71	25	1610	1	0,43	25,5	1610	3	0,60						
19	103,3	96,44	75	25	1610	1	0,54	25,5	1610	3	0,72	42,1	1615	5	1,19		
20	108,4	101,49	76	25	1610	1	0,61	25,5	1610	3	0,87						
21	113,4	106,51	76	25	1610	1	0,65	25,5	1610	3	1,01	42,1	1615	5	1,66		
22	118,4	111,55	76	25	1610	1	0,72	25,5	1610	3	1,18						
23	123,5	116,58	76	25	1610	1	0,77	25,5	1610	3	1,35	42,1	2012	5	1,78		
24	128,5	121,62	90	32	2012	1	0,98	90	32	2012	2	1,45					
25	133,6	126,66	90	32	2012	1	1,05	90	32	2012	2	1,55	105	44	2517	4	1,81
26	138,6	131,70	90	32	2012	1	1,11	90	32	2012	2	1,75					
27	143,6	136,74	90	32	2012	1	1,17	90	32	2012	2	1,98	110	44	2517	4	2,45
28	148,7	141,78	90	32	2012	1	1,29	90	32	2012	2	2,30					
30	158,8	151,87	90	32	2012	1	1,40	90	32	2012	2	2,63	120	44	2517	4	3,54
38	199,1	192,23	100	32	2012	1	2,43										
45	236,0	227,58	111	32	2012	1	3,55										
57*	296,6	288,18	111	32	2012	6	4,28										
76*	392,5	384,16	111	32	2012	6	5,95										