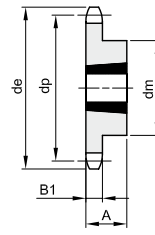
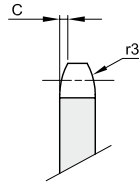




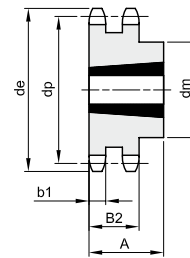
KETTENRÄDER FÜR TAPERBUCHSEN – DIN 8187

3/8" x 7/32"
9,525 x 5,72 mm
 Rollen Ø 6,35 mm
06B - 1 - 2 - 3

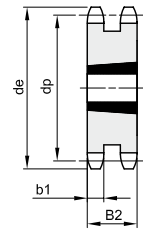
B1	B2	B3	b1	C	r3
5,3	15,4	25,6	5,2	1	10



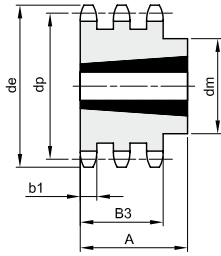
1



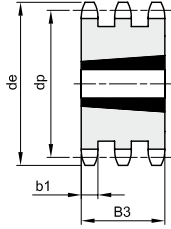
2



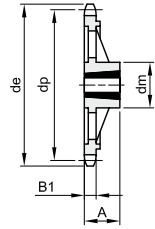
3



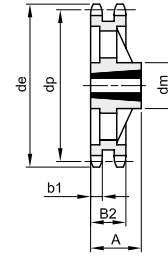
4



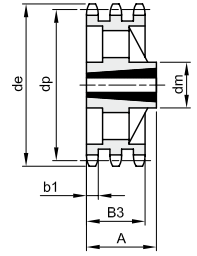
5



6



7



8

Werkstoff Stahl C45 / * Werkstoff Grauguss EN-GJL-200

Z	de	dp	einfach				zweifach				dreifach						
			dm	A	Buchsentyp	Typ	kg	dm	A	Buchsentyp	Typ	kg	dm	A	Buchsentyp	Typ	kg
17	55,5	51,83	45	22	1008	1	0,11	41	22	1008	2	0,11	25,6	1008	5	0,15	
18	58,6	54,85	45	22	1008	1	0,14	43	22	1008	2	0,15					
19	61,6	57,86	45	22	1008	1	0,15	46	22	1008	2	0,18	25,6	1008	5	0,24	
20	64,6	60,89	46	22	1008	1	0,16	48	22	1008	2	0,22					
21	67,6	63,90	46	22	1008	1	0,18	49	22	1008	2	0,16	25,6	1008	5	0,34	
22	70,6	66,93	55	22	1108	1	0,25	52	22	1108	2	0,28					
23	73,7	69,95	63	25	1210	1	0,27	59	25	1210	2	0,27	25,6	1210	5	0,30	
24	76,7	72,97	63	25	1210	1	0,30	61	25	1210	2	0,32					
25	79,7	75,99	63	25	1210	1	0,32	64	25	1210	2	0,37	25,6	1210	5	0,41	
26	82,7	79,02	63	25	1210	1	0,33	65	25	1210	2	0,44					
27	85,7	82,04	63	25	1210	1	0,34	70	25	1210	2	0,50	25,6	1210	5	0,55	
28	88,8	85,07	63	25	1210	1	0,37	70	25	1210	2	0,57					
30	94,8	91,12	63	25	1210	1	0,39	75	25	1210	2	0,68	79	38	1615	4	0,88
38	119,0	115,34	70	25	1210	1	0,65	80	25	1610	2	1,03	90	38	1615	4	1,75
45	141,1	136,54	70	25	1210	1	1,01										
57*	177,5	172,91	83	25	1210	6	1,34	92	25	1610	7	1,16					
76*	235,1	230,49	83	25	1210	6	1,84	92	25	1610	7	2,19					