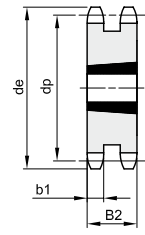
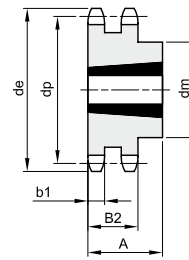
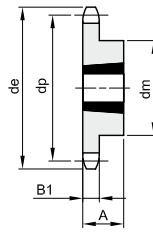
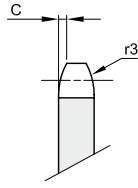




KETTENRÄDER FÜR TAPERBUCHSEN – DIN 8187

3/4" x 7/16"
19,05 x 11,68 mm
 Rollen Ø 12,07 mm
12B - 1 - 2 - 3

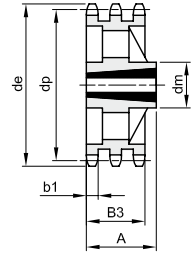
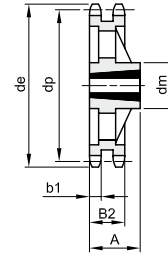
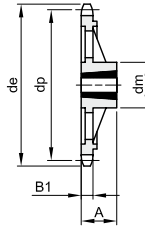
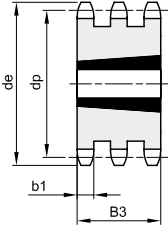
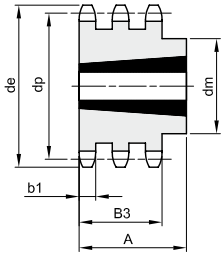
B1	B2	B3	b1	C	r3
11,1	30,3	49,8	10,8	2	19



1

2

3



4

5

6

7

8

Werkstoff Stahl C45 / * Werkstoff Grauguss EN-GJL-200

Z	de	dp	einfach				zweifach				dreifach						
			dm	A	Buchsentyp	Typ	kg	dm	A	Buchsentyp	Typ	kg	dm	A	Buchsentyp	Typ	kg
13	87,8	79,60	60	25	1210	1	0,35										
14	93,8	85,61	67	25	1610	1	0,40										
15	99,8	91,62	70	25	1610	1	0,44		30,3	1610	3	0,68		49,8	1615	5	1,11
16	105,8	97,65	71	25	1610	1	0,53		30,3	1610	3	0,89					
17	111,9	103,67	76	25	1610	1	0,66		30,3	1610	3	1,14		49,8	1615	5	1,75
18	117,9	109,71	90	32	2012	1	0,86	90	32	2012	2	1,18					
19	123,9	115,73	90	32	2012	1	0,94	90	32	2012	2	1,24		49,8	2012	5	1,99
20	130,0	121,78	90	32	2012	1	1,04	108	44	2517	2	1,40					
21	136,0	127,81	102	44	2517	1	1,24	108	44	2517	2	1,68		49,8	2517	5	2,09
22	142,0	133,86	108	44	2517	1	1,60	108	44	2517	2	1,99					
23	148,1	139,90	108	44	2517	1	1,70	108	44	2517	2	2,24		49,8	2517	5	3,00
24	154,1	145,94	108	44	2517	1	1,81	108	44	2517	2	2,54					
25	160,2	151,99	108	44	2517	1	1,93	108	44	2517	2	2,87		49,8	2517	5	3,98
26	166,2	158,04	108	44	2517	1	2,04	108	44	2517	2	3,17					
27	172,3	164,09	108	44	2517	1	2,14	108	44	2517	2	3,55	140	51	3020	4	3,90
28	178,3	170,13	108	44	2517	1	2,37	108	44	2517	2	4,10					
30	190,4	182,24	108	44	2517	1	2,60	108	44	2517	2	4,62	140	51	3020	4	5,64
38	238,9	230,69	108	44	2517	1	3,93	140	51	3020	2	8,11	140	51	3020	4	11,58
45	283,2	273,10	124	44	2517	1	5,52										
57*	355,9	345,81	124	44	2517	6	6,48	160	51	3020	7	10,28	160	51	3020	8	13,23
76*	471,1	460,99	124	44	2517	6	9,71	160	51	3020	7	15,24					