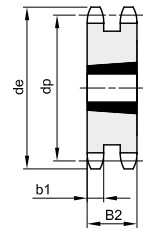
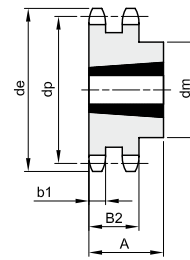
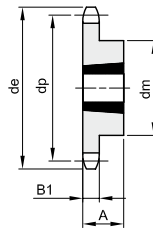
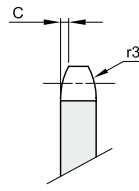




KETTENRÄDER FÜR TAPERBUCHSEN – DIN 8187

1/2" x 5/16"
12,7 x 7,75 mm
 Rollen Ø 8,51 mm
08B - 1 - 2 - 3

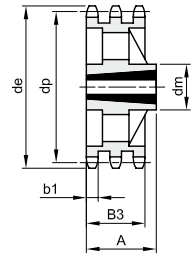
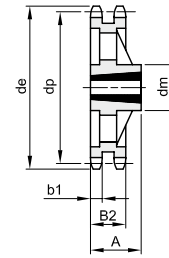
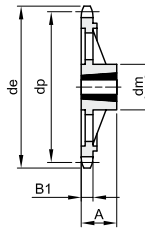
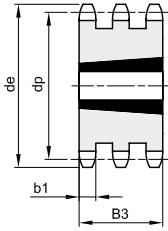
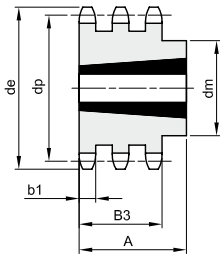
B1	B2	B3	b1	C	r3
7,2	21	34,9	7	1,3	13



1

2

3



4

5

6

7

8

Werkstoff Stahl C45 / * Werkstoff Grauguss EN-GJL-200

Z	de	dp	einfach				zweifach					dreifach							
			dm	A	Buchsentyp	Typ	kg	dm	A	Buchsentyp	Typ	kg	dm	A	Buchsentyp	Typ	kg		
15	66,5	61,80	45	22	1008	1	0,16	46	22	1008	2	0,22							
16	69,9	65,10	50	22	1108	1	0,20	50	22	1108	2	0,22							
17	74,5	69,11	60	25	1210	1	0,22	56	25	1210	2	0,23		34,9	1210	5	0,35		
18	78,0	73,14	60	25	1210	1	0,27	60	25	1210	2	0,30							
19	82,5	77,15	63	25	1210	1	0,33	62	25	1210	2	0,38	62	38	1215	4	0,61		
20	86,0	81,19	67	25	1610	1	0,27	66	25	1610	2	0,45							
21	90,6	85,21	71	25	1610	1	0,36	70	25	1610	2	0,50	70	38	1615	4	0,65		
22	94,1	89,24	71	25	1610	1	0,36	76	25	1610	2	0,55							
23	98,7	93,26	76	25	1610	1	0,50	79	25	1610	2	0,62	70	38	1615	4	0,93		
24	102,1	97,29	76	25	1610	1	0,53	84	32	2012	2	0,68							
25	106,7	101,32	76	25	1610	1	0,56	87	32	2012	2	0,72		34,9	2012	5	0,85		
26	110,2	105,36	76	25	1610	1	0,60	87	32	2012	2	0,82							
27	114,8	109,39	76	25	1610	1	0,63	87	32	2012	2	0,92		34,9	2012	5	1,18		
28	118,3	113,42	90	32	2012	1	0,77	87	32	2012	2	1,10							
30	126,9	121,49	90	32	2012	1	0,91	87	32	2012	2	1,24		34,9	2012	5	1,73		
38	159,2	153,79	90	32	2012	1	1,25	100	32	2012	2	2,50		34,9	2012	5	3,53		
45	188,6	182,07	111	32	2012	1	1,68												
57*	237,1	230,54	111	32	2012	6	2,78	111	32	2012	7	3,64							
76*	313,9	307,33	111	32	2012	6	3,81	111	32	2012	7	5,09							