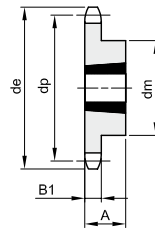
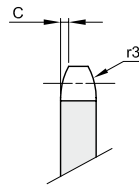




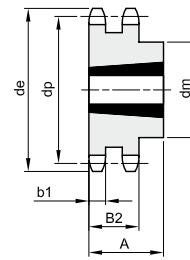
KETTENRÄDER FÜR TAPERBUCHSEN – DIN 8187

1"1/4 x 3/4"
31,75 x 19,56 mm
 Rollen Ø 19,05 mm
20B - 1 - 2 - 3

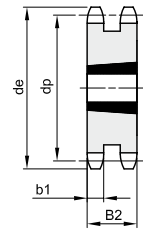
B1	B2	B3	b1	C	r3
18,5	54,6	91	18,2	3,5	32



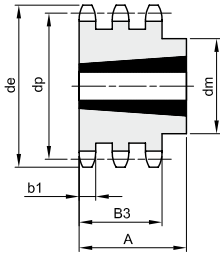
1



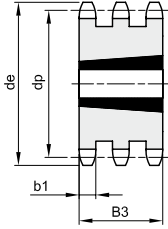
2



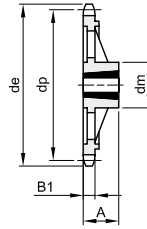
3



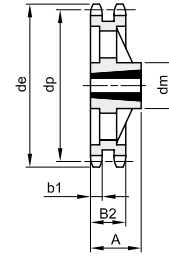
4



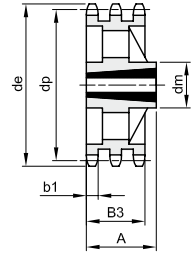
5



6



7



8

Werkstoff Stahl C45 / * Werkstoff Grauguss EN-GJL-200

Z	de	dp	einfach				zweifach				dreifach						
			dm	A	Buchsentyp	Typ	kg	dm	A	Buchsentyp	Typ	kg	dm	A	Buchsentyp	Typ	kg
12	137,0	122,68	90	32	1615	1	1,90										
13	147,5	132,65	90	32	2012	1	1,50	54,6	2517	3	2,20						
14	157,6	142,68	110	44	2517	1	2,40										
15	167,7	152,72	110	44	2517	1	3,39	54,6	2517	3	4,00	91	3020	5	13,00		
16	177,7	162,75	110	44	2517	1	4,23										
17	187,7	172,78	110	44	2517	1	5,07	54,6	2517	3	5,00	91	3030	5	15,00		
18	197,8	182,85	110	44	2517	1	5,91										
19	207,9	192,91	110	44	2517	1	6,75	140	76	3030	2	6,30	91	3030	5	17,00	
20	217,9	202,98	110	44	2517	1	7,23										
21	228,0	213,04	120	44	2517	1	7,70	140	76	3030	2	8,80	91	3535	5	19,00	
23	248,2	233,17	120	44	2517	1	8,78	140	76	3030	2	9,80	91	3535	5	23,00	
25	268,4	253,33	120	44	2517	1	9,50	140	76	3030	2	10,50	91	3535	5	28,00	
30	318,7	303,75	160	51	3020	1	11,90	160	76	3030	2	14,00	91	3535	5	40,00	
38*	399,4	384,49	160	51	3020	6	15,80	160	76	3030	7	22,00	178	91	3535	8	35,00
57*	592,3	576,36	160	51	3020	6	25,50	178	89	3535	7	37,00	210	102	4040	8	42,00
76*	784,3	768,32	160	51	3020	6	39,00	178	89	3535	7	62,00	242	114	4545	8	85,00