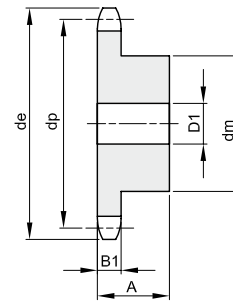
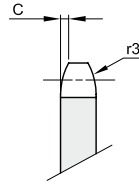




KETTENRÄDER FÜR ROLLENKETTEN – DIN 8188 „ASA“

ASA 140
44,45 x 25,4 mm
 Rollen Ø 25,4 mm
28A - 1



B1	B2	B3	b1	C	r3
23,5				5,8	47,5

Werkstoff Stahl C45

Z	de	dp	einfach				zweifach				dreifach				
			dm	D1	A	kg	dm	D2	A	kg	dm	D3	A	kg	
8	132,0	116,15													
9	146,0	129,96													
10	160,0	143,85	100	25	70	5,23									
11	174,0	157,77	112	25	70	6,53									
12	188,0	171,74	125	25	70	8,02									
13	204,0	185,75	125	25	70	8,72									
14	218,0	199,76	125	25	70	9,46									
15	232,0	213,79													
16	246,0	227,84	160	30	75	14,65									
17	260,0	241,90	160	30	75	15,50									
18	274,0	255,98													
19	289,0	270,06													
20	303,0	284,15													
21	317,0	298,24													
22	331,0	312,34													
23	345,0	326,44													
24	359,0	340,55													
25	373,0	354,66													
26	387,0	368,77													
27	401,0	382,88													
28	416,0	397,00													
29	430,0	411,12													
30	444,0	425,24													
31	458,0	439,37													
32	472,0	453,49													
33	486,0	467,62													
34	500,0	481,75													
35	514,0	495,88													
36	529,0	510,01													
37	543,0	524,13													
38	557,0	538,27													
39	571,0	552,40													
40	585,0	566,54													