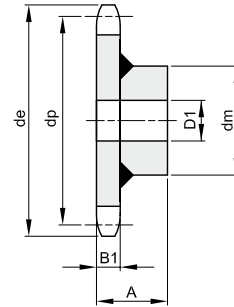
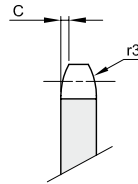




# KETTENRÄDER FÜR FÖRDERKETTEN

Teilung **50,8**  
Rollen  $\varnothing$  **30**



B1	C	r3
8,8	3	50

Werkstoff Stahl

Z	de	dp	dm	D1	A	kg
8	149,0	132,74	58	20	39	1,35
10	182,0	164,39	88	20	44	2,85
12	214,0	196,27	88	25	44	3,37
14	247,0	228,29	88	25	44	4,08
16	279,0	260,39	118	30	59	7,34