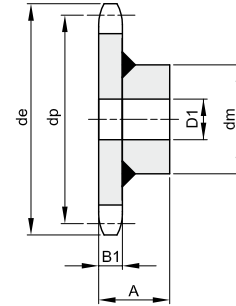
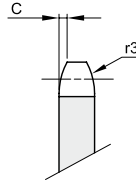


# Teilung 100 Rollen Ø 40



B1	C	r3
----	---	----

20	3	50
----	---	----

Werkstoff Stahl

Z	de	dp	dm	D1	A	kg
6	220,0	200,00	118	25	70	8,64
7	251,0	230,48	118	25	70	10,20
8	283,0	261,31	118	30	70	11,97
9	314,0	292,40	118	30	70	14,04

Z	de	dp	dm	D1	A	kg
10	345,0	323,61	118	30	70	16,35
11	378,0	354,95	118	30	70	18,82
12	409,0	386,40	118	30	70	21,58
13	441,0	417,90	118	30	70	25,00