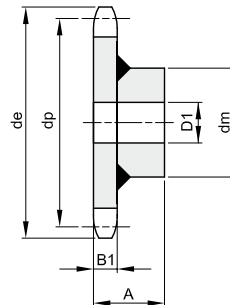
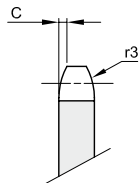




# KETTENRÄDER FÜR FÖRDERKETTEN

## Teilung 100 Rollen Ø 31



| B1   | C | r3 |
|------|---|----|
| 13,5 | 3 | 50 |

Werkstoff Stahl

| Z  | de    | dp     | dm  | D1 | A    | kg    |
|----|-------|--------|-----|----|------|-------|
| 6  | 218,0 | 200,00 | 88  | 25 | 48,5 | 4,80  |
| 7  | 249,0 | 230,48 | 88  | 25 | 48,5 | 5,80  |
| 8  | 280,0 | 261,31 | 118 | 30 | 63,5 | 9,67  |
| 9  | 311,0 | 292,40 | 118 | 30 | 63,5 | 10,95 |
| 10 | 342,0 | 323,61 | 118 | 30 | 63,5 | 12,63 |
| 11 | 375,0 | 354,95 | 118 | 30 | 63,5 | 14,34 |

| Z  | de    | dp     | dm  | D1 | A    | kg    |
|----|-------|--------|-----|----|------|-------|
| 12 | 406,0 | 386,40 | 118 | 30 | 63,5 | 16,51 |
| 13 | 437,0 | 417,90 | 118 | 30 | 63,5 | 18,51 |
| 14 | 469,0 | 449,40 | 118 | 30 | 63,5 | 20,93 |
| 15 | 500,0 | 480,97 | 118 | 30 | 63,5 | 23,42 |
| 16 | 532,0 | 512,60 | 133 | 30 | 65,0 | 27,16 |