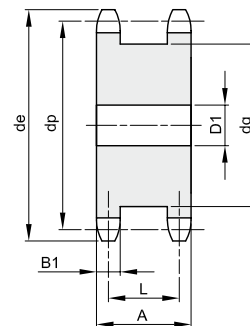
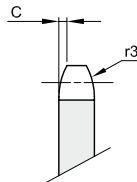


3/4" x 7/16"
19,05 x 11,68 mm
 Rollen Ø 12,07 mm
12B - 1



| B1 | C | r3 |
|------|---|----|
| 11,1 | 2 | 19 |

Werkstoff Stahl C45

| Z | de | dp | D1 | dg | A | L | kg |
|----|-------|--------|----|-----|----|------|------|
| 12 | 81,8 | 73,60 | 20 | 53 | 44 | 32,9 | 0,91 |
| 13 | 87,8 | 79,59 | 20 | 59 | 44 | 32,9 | 1,12 |
| 14 | 93,8 | 85,61 | 20 | 65 | 44 | 32,9 | 1,33 |
| 15 | 99,8 | 91,63 | 20 | 71 | 44 | 32,9 | 1,57 |
| 16 | 105,8 | 97,65 | 20 | 77 | 44 | 32,9 | 1,84 |
| 17 | 111,9 | 103,67 | 20 | 83 | 44 | 32,9 | 2,12 |
| 18 | 117,9 | 109,71 | 20 | 89 | 44 | 32,9 | 2,42 |
| 19 | 123,9 | 115,75 | 20 | 95 | 44 | 32,9 | 2,75 |
| 20 | 130,0 | 121,78 | 20 | 101 | 44 | 32,9 | 3,09 |
| 21 | 136,0 | 127,82 | 25 | 107 | 44 | 32,9 | 3,42 |
| 23 | 148,1 | 139,90 | 25 | 119 | 44 | 32,9 | 4,21 |
| 25 | 160,2 | 152,00 | 25 | 131 | 44 | 32,9 | 5,07 |