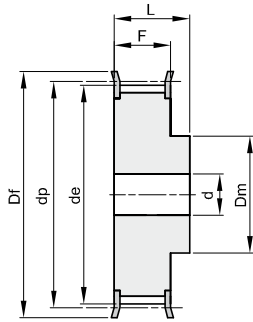


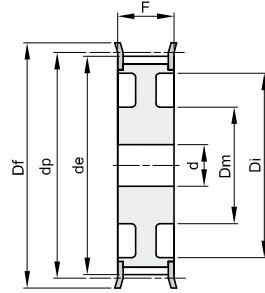
8M

Teilung 8 mm

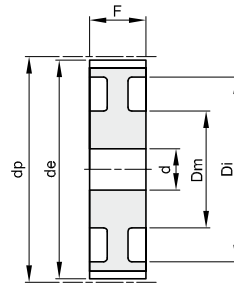
für Zahnriemenbreite 50 mm



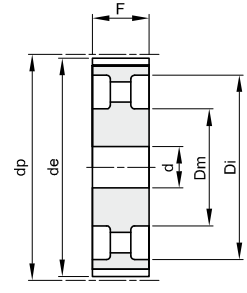
2F



7F



7



8

Werkstoff: Stahl

Werkstoff: Grauguss (GG)

code	Typ	Werkstoff	Zähnezahl	dp	de	Df	Dm	Di	F	L	d	Nr. Bordscheiben	kg
22 8M 50	2F	St	22	56,02	54,65	60	43		60	70	12	308	1,10
24 8M 50	2F	St	24	61,11	59,74	66	45		60	70	12	310	1,30
26 8M 50	2F	St	26	66,21	64,84	71	48		60	70	12	311	1,60
28 8M 50	2F	St	28	71,30	70,08	75	50		60	70	14	312	1,70
30 8M 50	2F	St	30	76,39	75,13	83	55		60	70	14	314	2,00
32 8M 50	2F	St	32	81,49	80,16	87	60		60	70	14	315	2,35
34 8M 50	2F	St	34	86,58	85,21	91	66		60	70	14	316	2,80
36 8M 50	2F	St	36	91,67	90,30	98	70		60	70	14	319	3,10
38 8M 50	2F	St	38	96,77	95,39	103	75		60	70	14	320	3,30
40 8M 50	2F	St	40	101,86	100,49	106	75		60	70	14	321	3,60
44 8M 50	2F	St	44	112,05	110,67	119	75		60	70	14	325	4,40
48 8M 50	2F	St	48	122,23	120,86	127	75		60	70	14	327	5,00
56 8M 50	7F	St	56	142,60	141,23	148	90	116	60	60	18	333	5,68
64 8M 50	7F	St	64	162,97	161,60	168	100	137	60	60	18	338	6,93
72 8M 50	7F	St	72	183,35	181,97	192	100	158	60	60	18	340	7,95
80 8M 50	7	GG	80	203,72	202,35		110	180	60	60	18		7,96
90 8M 50	7	GG	90	229,18	227,81		110	204	60	60	18		9,20
112 8M 50	8	GG	112	285,21	283,83		110	254	60	60	18		12,16
144 8M 50	8	GG	144	366,69	365,32		110	336	60	60	20		15,68
168 8M 50	8	GG	168	427,81	426,44		120	400	60	60	20		18,99
192 8M 50	8	GG	192	488,92	487,55		130	460	60	60	20		24,09